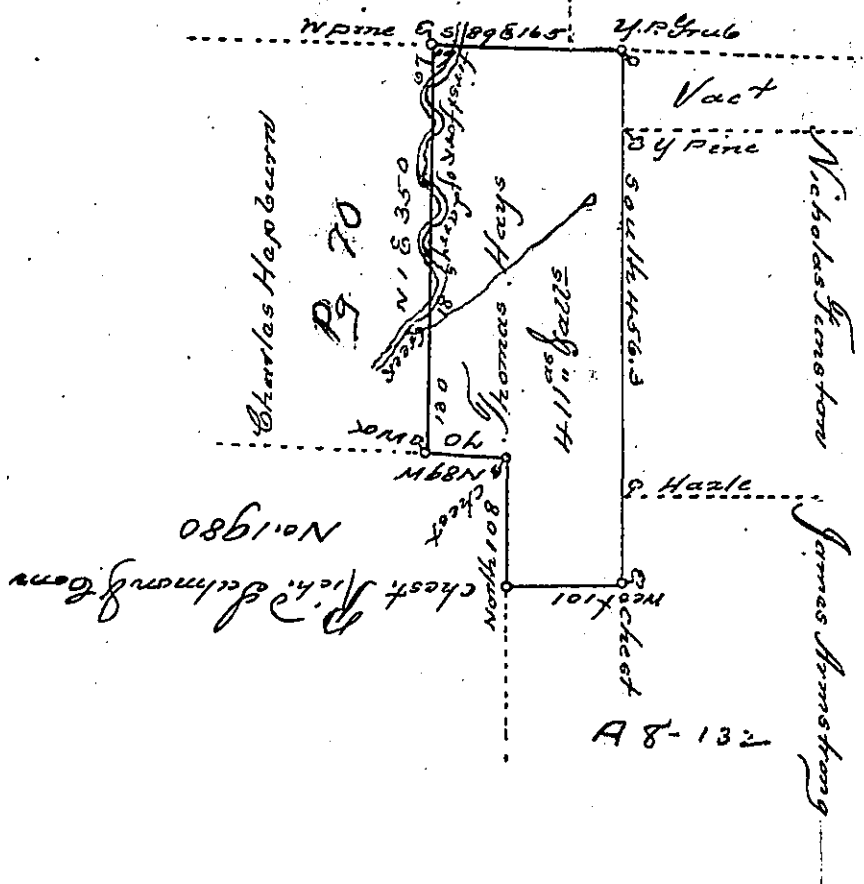


Pg. 57

Hewes & Fisher No. 1727 No. 1730



Situated in Cummings Township, County of Lycoming and near the head of the first fork of Larrys Creek and bounded as above described, Surveyed to Thomas Hays on the 21st day of October, 1839 by Virtue of his Warrant for 400 acres dated the 14th day of August 1830. Containing four hundred and eleven acres with allowance of six per Cent for Roads &c.

Alexander H. McHenry D. S.

Approved, this day May 19th 1847 by

J. R. Riddell D. S.

To Jacob Tallade, Esquire
Surveyor General

IN TESTIMONY that the above is a copy of the original remaining on file in the Department of Internal Affairs of Pennsylvania, made conformably to an Act of Assembly approved the 16th day of February, 1833, I have hereunto set my Hand and caused the Seal of said Department to be affixed at Harrisburg, this twenty third day of March, 1905,

George D. Brown
Secretary of Internal Affairs.